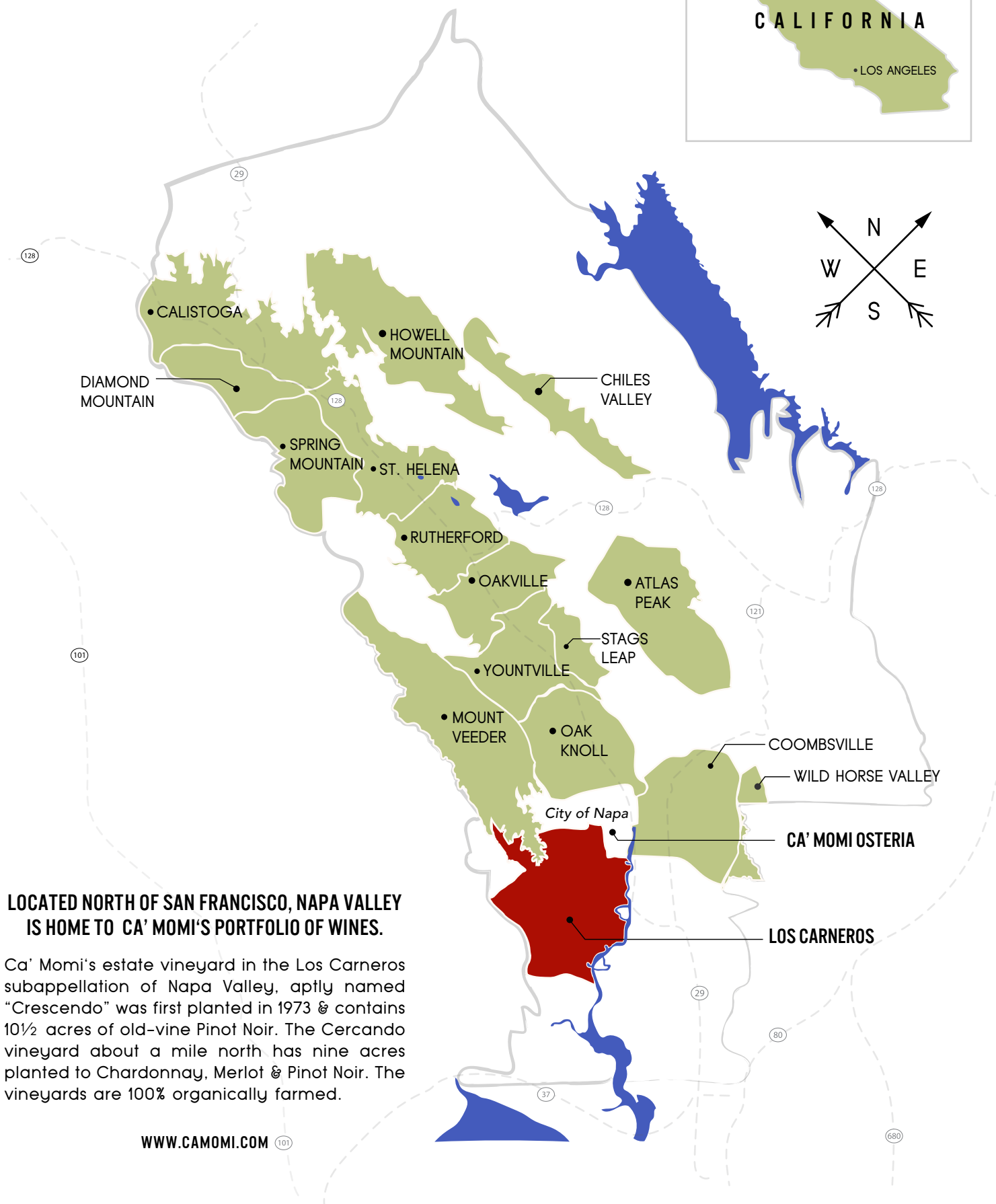


# CA' MOMI

HEARTCRAFTED IN THE NAPA VALLEY



**LOCATED NORTH OF SAN FRANCISCO, NAPA VALLEY IS HOME TO CA' MOMI'S PORTFOLIO OF WINES.**

Ca' Momi's estate vineyard in the Los Carneros subappellation of Napa Valley, aptly named "Crescendo" was first planted in 1973 & contains 10½ acres of old-vine Pinot Noir. The Cercando vineyard about a mile north has nine acres planted to Chardonnay, Merlot & Pinot Noir. The vineyards are 100% organically farmed.